

PHOTO REPORT

Messr.

Job No. : 2507

Date : 27 Nov '15

Location : Tanjung Pelepas Port, Malaysia

Subject: Crack repairs on Stbd Gangway



Arrive the site



Loading the materials to the vessel



Tie up the staging tubes and planks with the lifting belt



Lift up the materials and move to the store room



Identify the location of the cracks



Erect the hanging staging



Cut off the brackets



Dismantle the bolt and nut of the aluminium plate



Use chain block to hold the aluminium plate



Welding at the outside of gangway



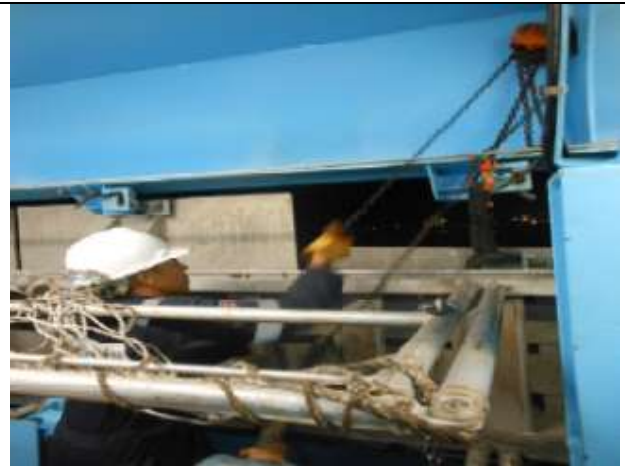
Welding at the inner side of the gangway



DPI test in progress



Carry out DPI test on weldments



Lift up the aluminium plate and weld it back



Dismantle the hanging staging



Prepare for load test



Load test in progress & holding time 5mins witness by CO



Job complete and carry the housekeeping