

PHOTO REPORT

Messr.

Job No. : 2763

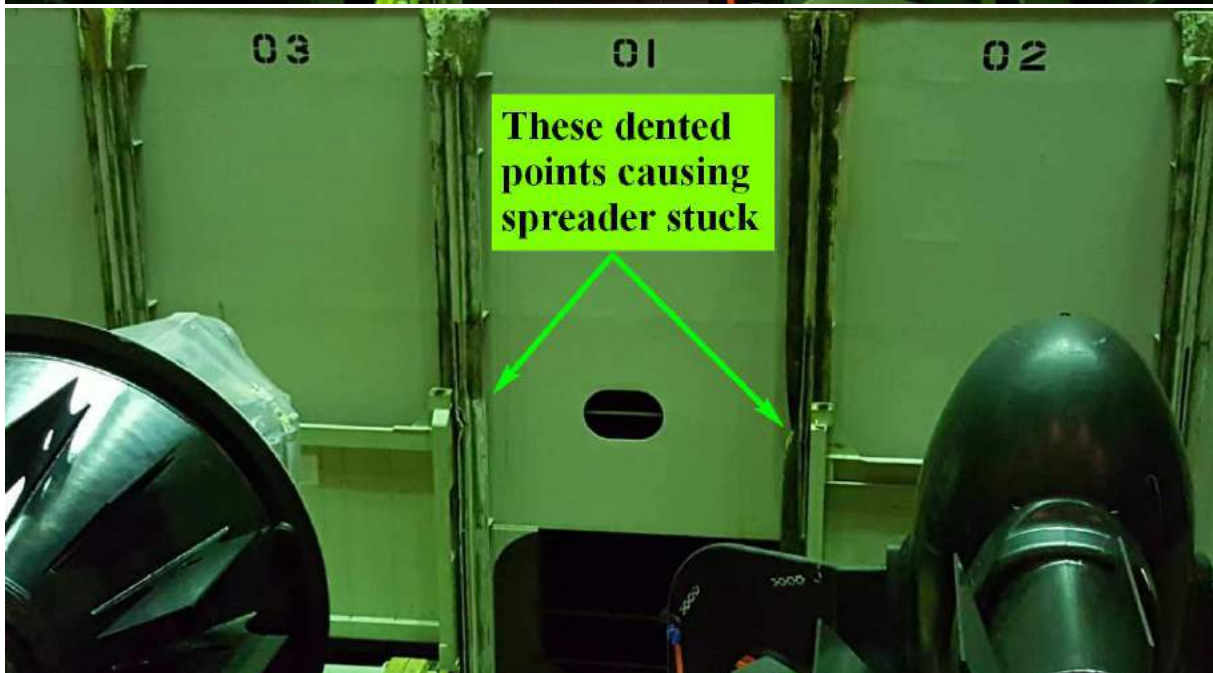
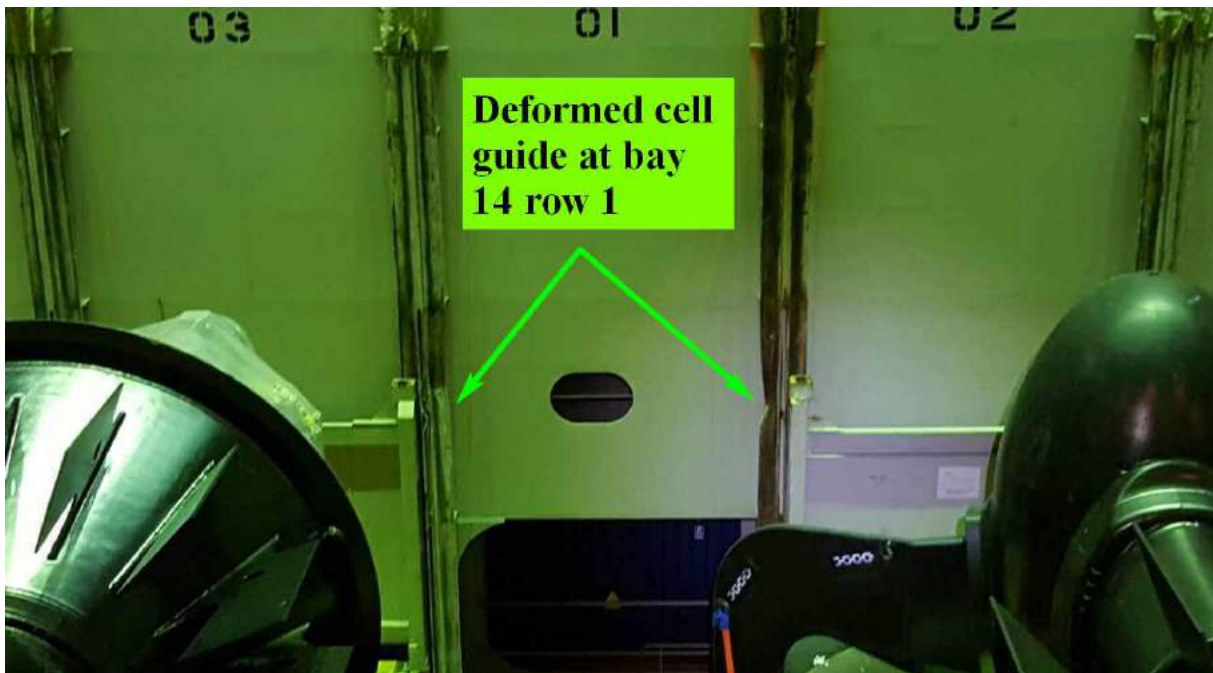
Date : 12th Oct 2016

Location : Singapore PSA

Pg1

No.	Description
-----	-------------

Subject : Removal of Damaged Cell Guide @ Bay14 Row01 Tier12 by Cold Cut Method

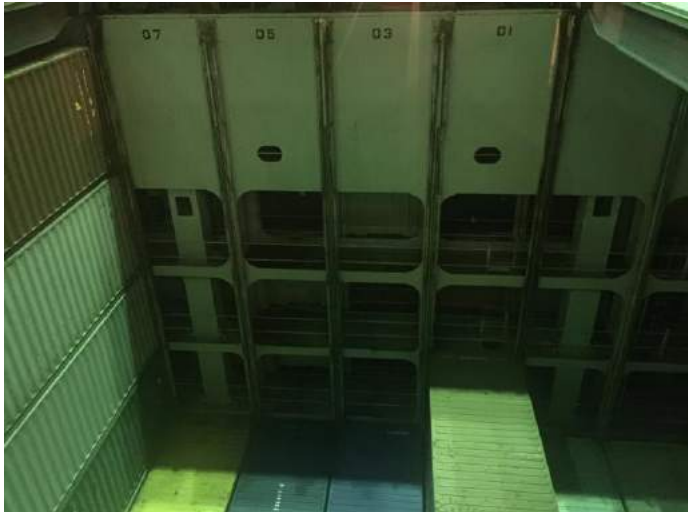


- * Deck containers were discharged and hatch cover of Bay 14 (C) opened at 2230hrs.
- * Deformed cell guide (Port&Stbd) @ AFT Row 1 were revealed as photo shown above.

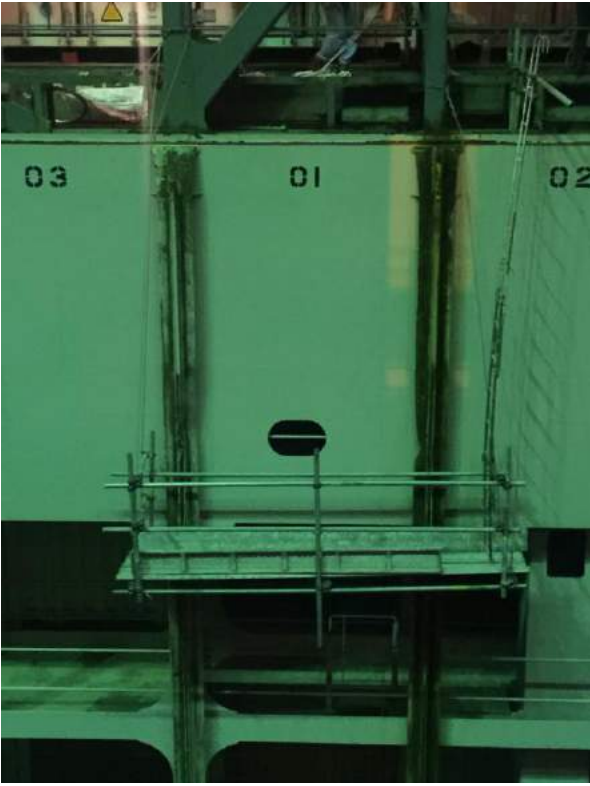



No.	Description
-----	-------------



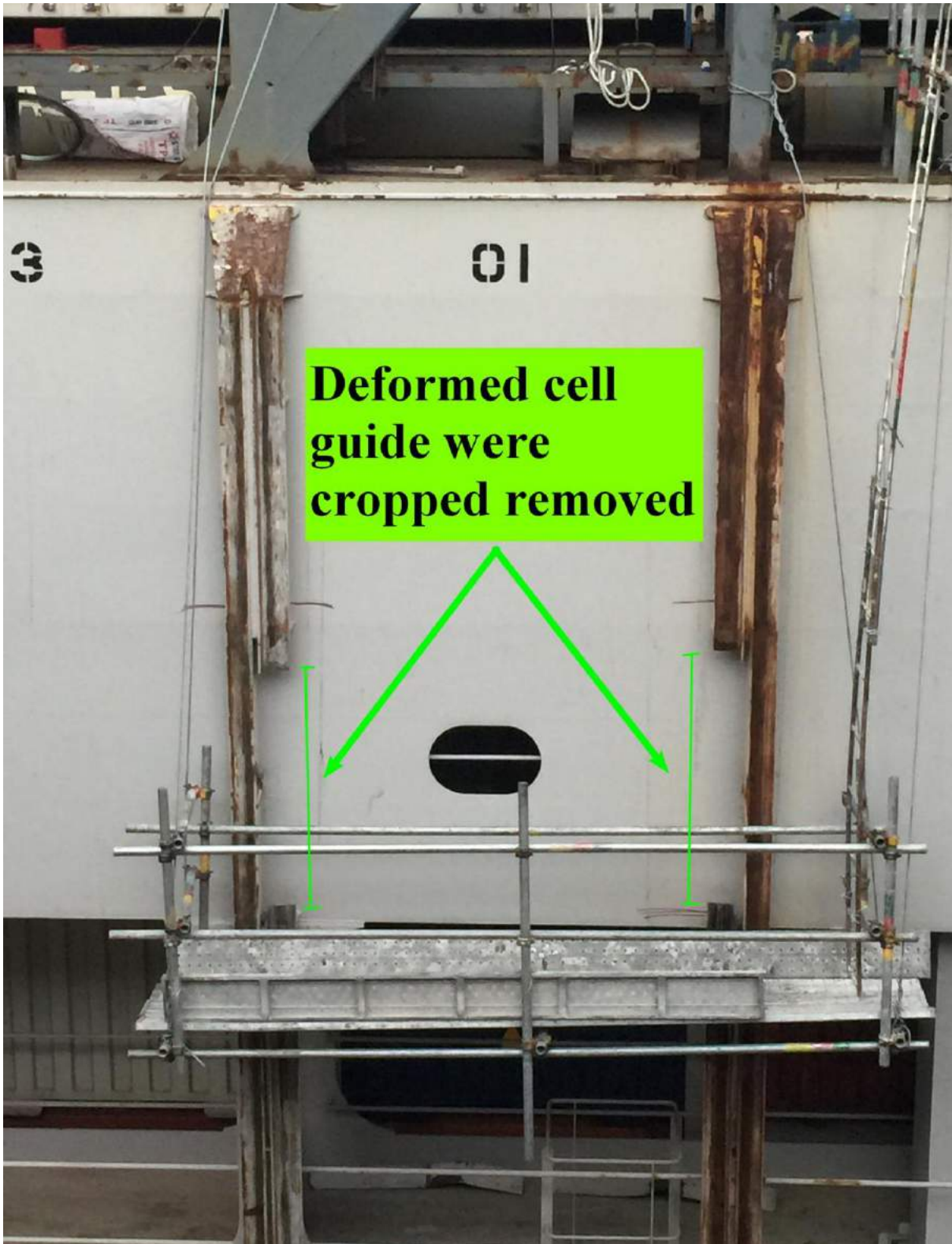
- * After discharged some of containers in Bay 14 Centre, for safe operation, PSA terminal proceed to try to discharge containers in Row 1 with spreader.
- * Attempt not successful and confirmed removal of damaged cell guide by cold cut.



- * Prior to work commencement, for safe work/operation, PSA terminal to isolate Row 1 by discharging surrounding containers @ Row 2/4/6 and Row 3/5/7.

No.	Description
	
<p>* Constructed hanging staging in bay 14 covering Port & Stbdside cell guide of Row 1.</p>	
	
<p>* Carried out cold cutting on deformed cell guide with electrical saw, water applied throughout.</p>	

No.	Description
-----	-------------



* At 0645hrs, deformed cell guide @ Row 1 were cropped & removed.

No.	Description
	
	<ul style="list-style-type: none">* After inspected by CO & NYK representative, staging were dismantled immediately.* Cell guide of adjacent Row 2 & Row 3 were not cropped as cargo was able to discharged.

No.	Description
-----	-------------



* Containers in Row 1 were successfully discharged, work certified completed.