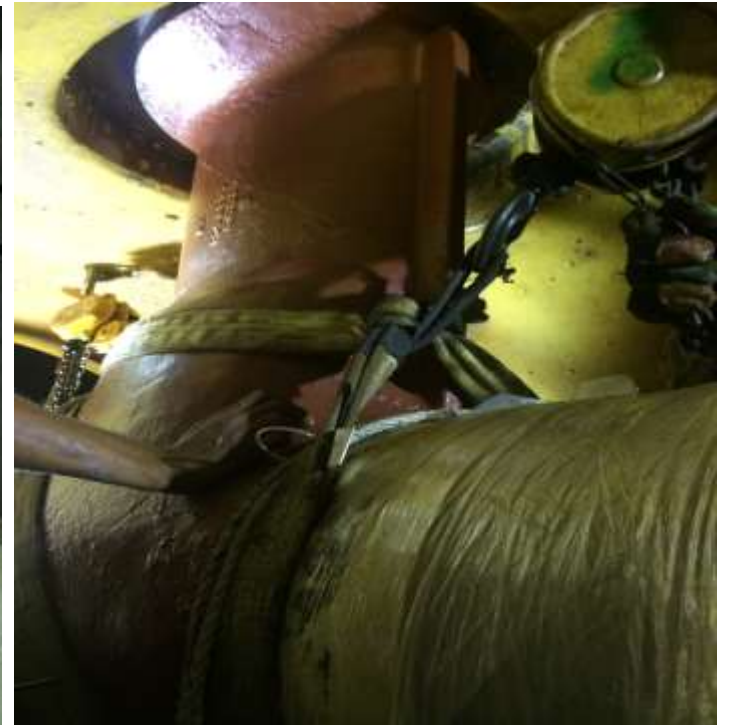
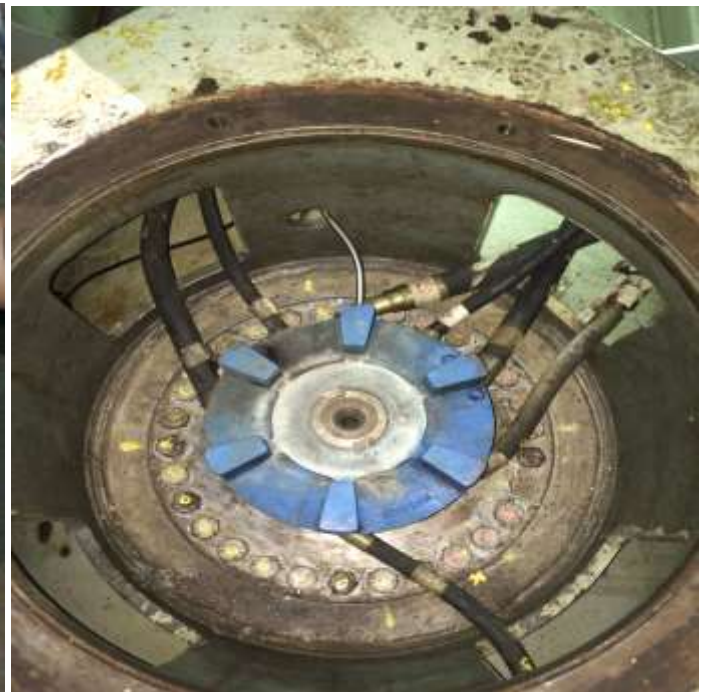




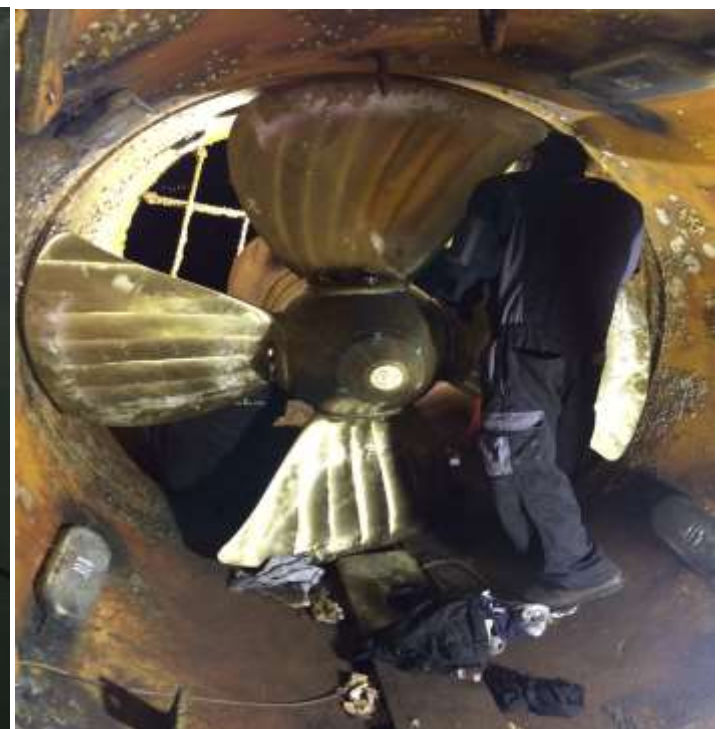
Transferred bow thruster unit from pontoon into thruster tunnel and positioned in place





Torque tightening of 960Nm on all bolts

Re-connect hydraulics hoses and coupling insert to the input shaft



Transferred and installed thruster's blade one by one, applied grease on O rings and reassembled bolts connections,



Torque tightening 600Nm on all the propeller blade bolts



Spot welding on blade bolts locking plate



Filling up thruster oil and verified not leakage. And after carry out thruster pitch movement test.





Reinstall back the guard grip



Thank You